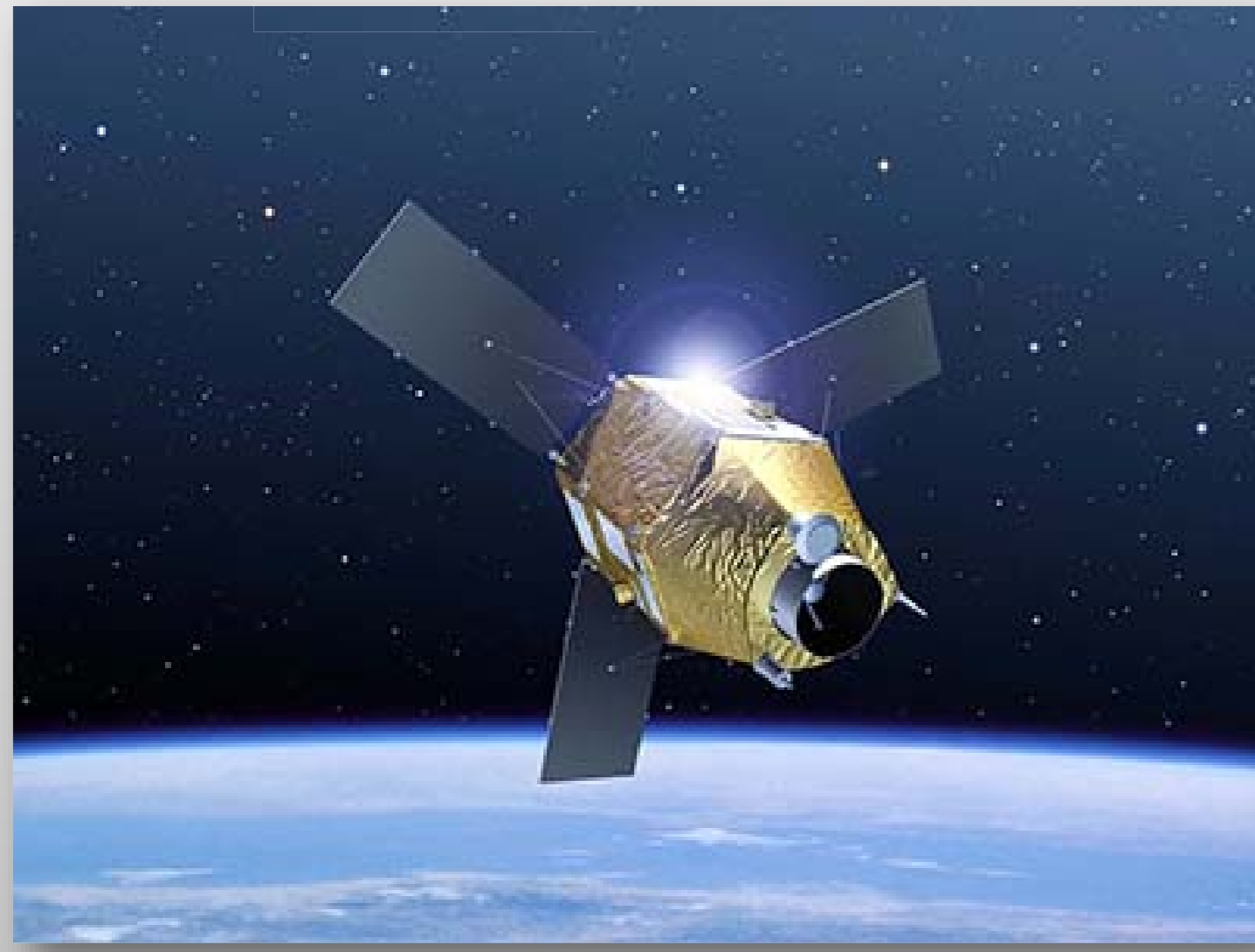


I SITI DI IMPORTANZA COMUNITARIA (SIC) MARINI DELLA CALABRIA
STATO DELLE CONOSCENZE E IMPLICAZIONI NELLE STRATEGIE DI MONITORAGGIO, GESTIONE E CONSERVAZIONE.
VALUTAZIONE DELLO STATO ECOLOGICO DELLE ACQUE MARINO COSTIERE DELLA CALABRIA [METODO "CARLIT"].

MAPPATURA FONDALI SIC MEDIANTE IMMAGINI SATELLITARI PLEIADES E WORLD VIEW 2

Pleiades MS

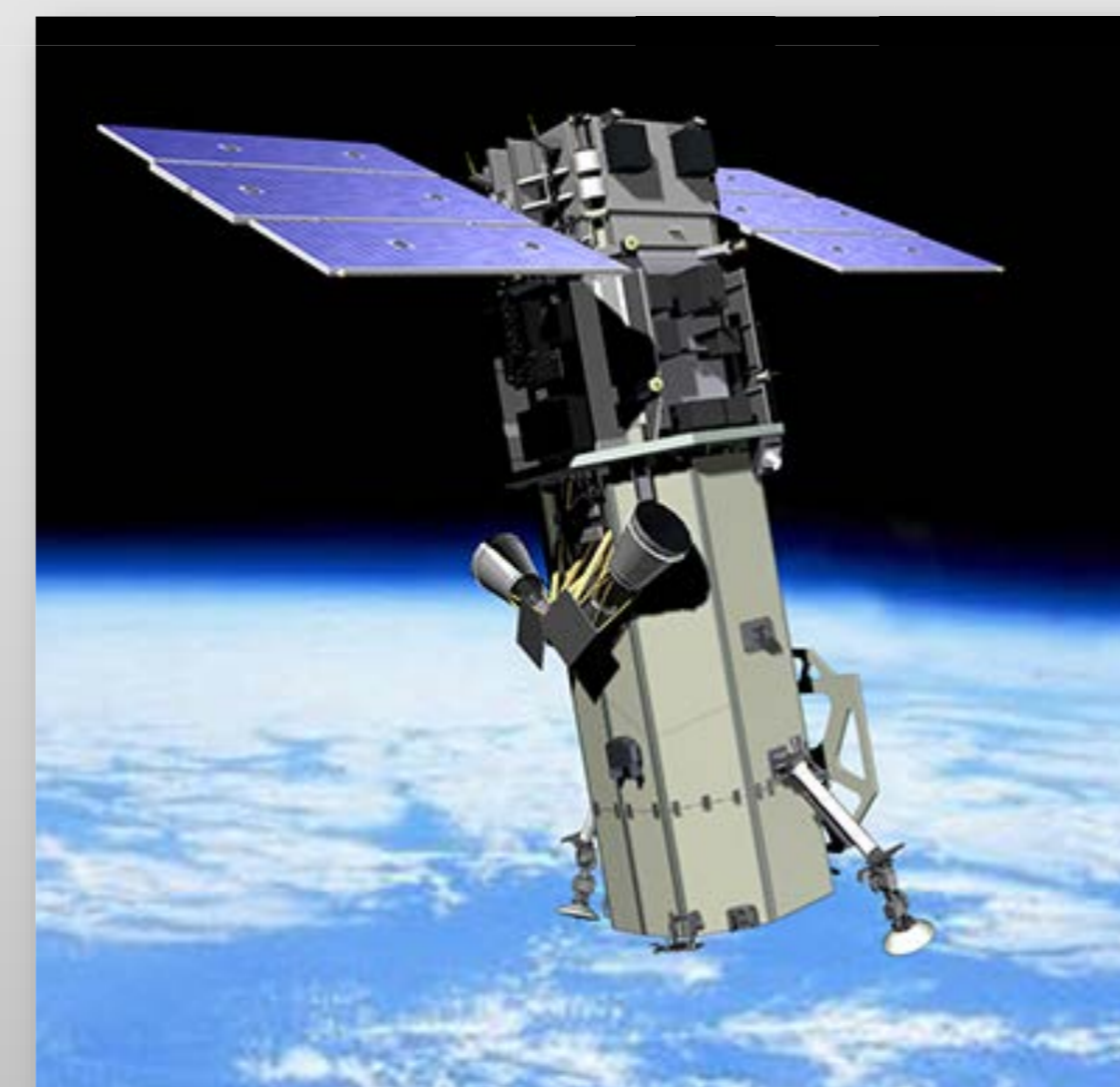


AIRBUS Defence & Space

Sensor Bands: 5 Multispectral (P: 480-830 nm
Blue: 430-550 nm Green: 490-610 nm
Red: 600-720 nm Near Infrared: 750-950 nm);

Sensor Resolution GSD: (50-cm panchromatic
50-cm color (pansharpened) 2-meter multispectral
Bundle: 50-cm panchromatic and 2-meter multispectral);

Satellite World View 2 MS

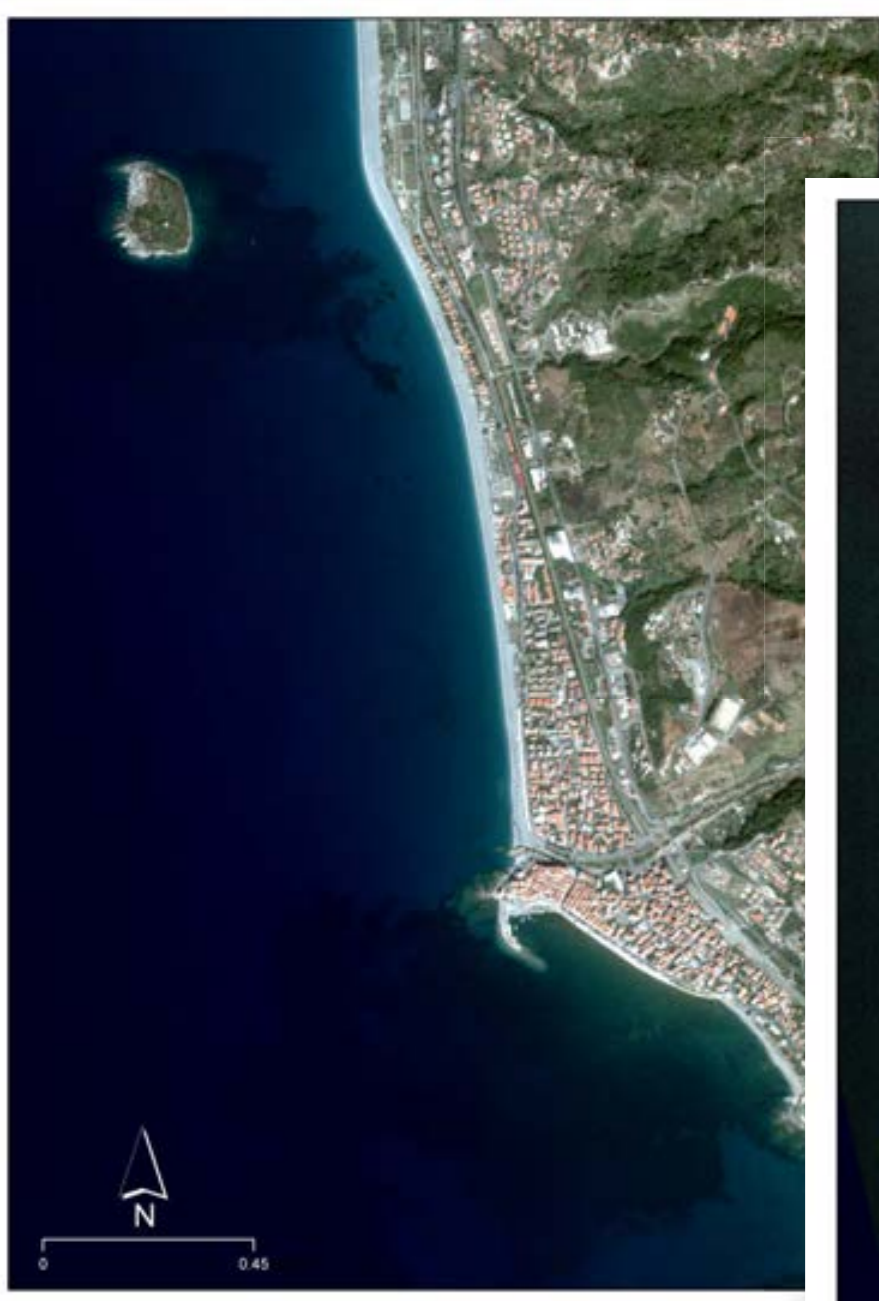


DigitalGlobe

Sensor Bands: 8 Multispectral (4 standard colors:
red, blue, green, near-IR); 4 new colors: red edge,
coastal, yellow, near-IR2;

Sensor Resolution GSD: Ground Sample Distance
Panchromatic: 0.46 meters GSD at Nadir, 0.52
meters GSD at 20° Off-Nadir
Multispectral: 1.84 meters GSD at Nadir, 2.4
meters GSD at 20° Off-Nadir

Fondali Isola di Cirella - Diamante



Pleiades - Anno 2018

Immagine WCC



Fondali di Pizzo Calabro

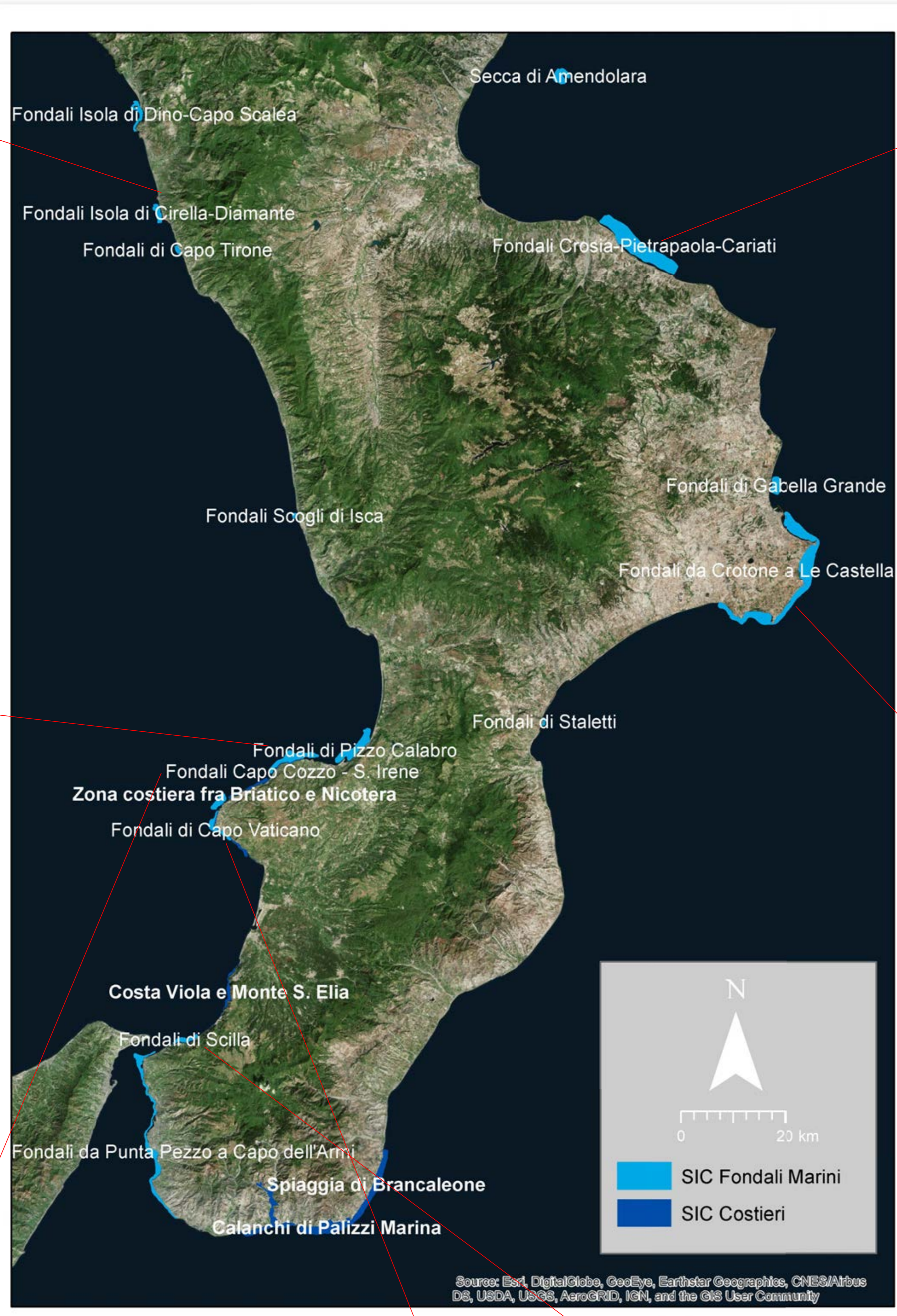


Pleiades - Anno 2018

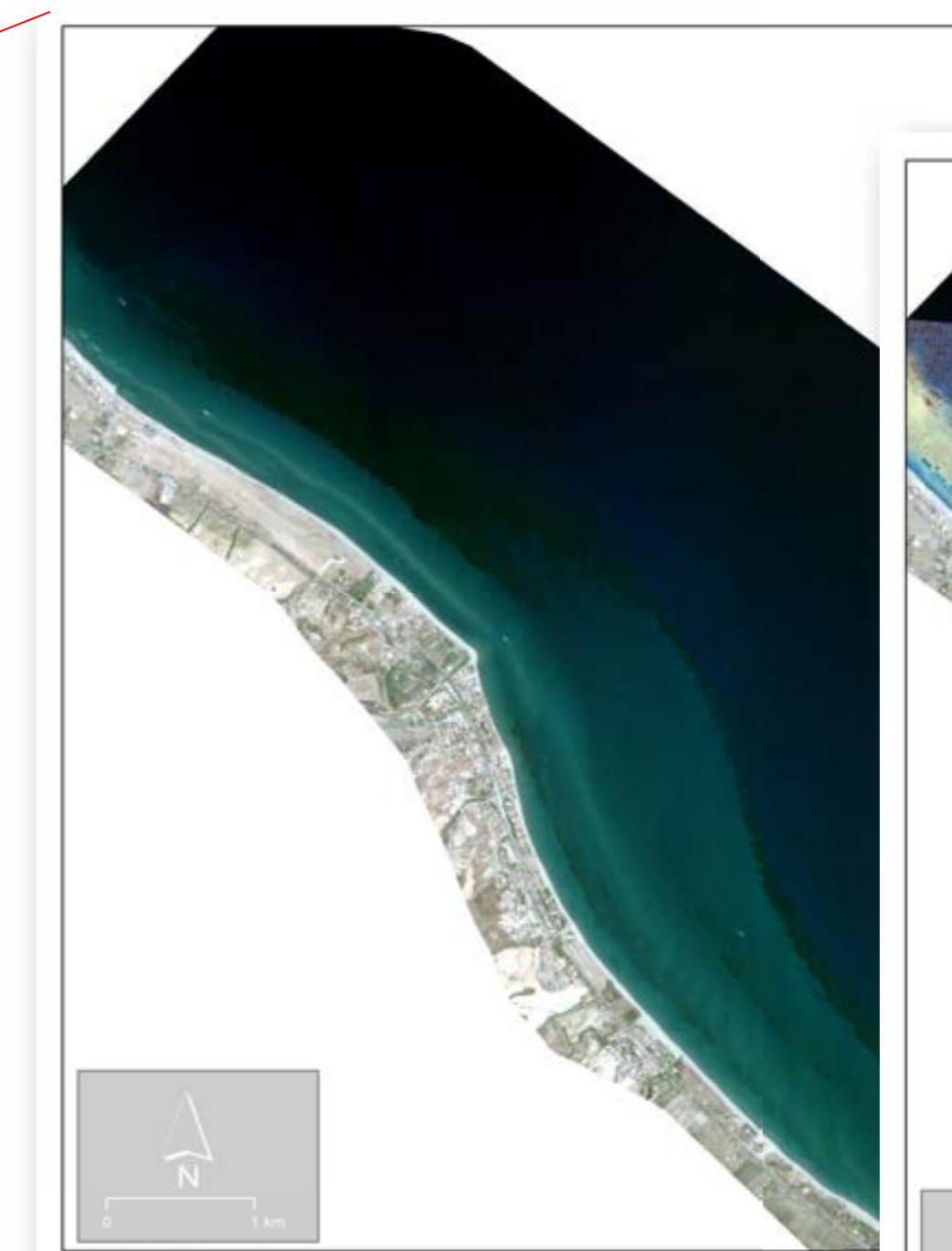
Fondali Capo Cozzo S'Irene



Pleiades - Anno 2018

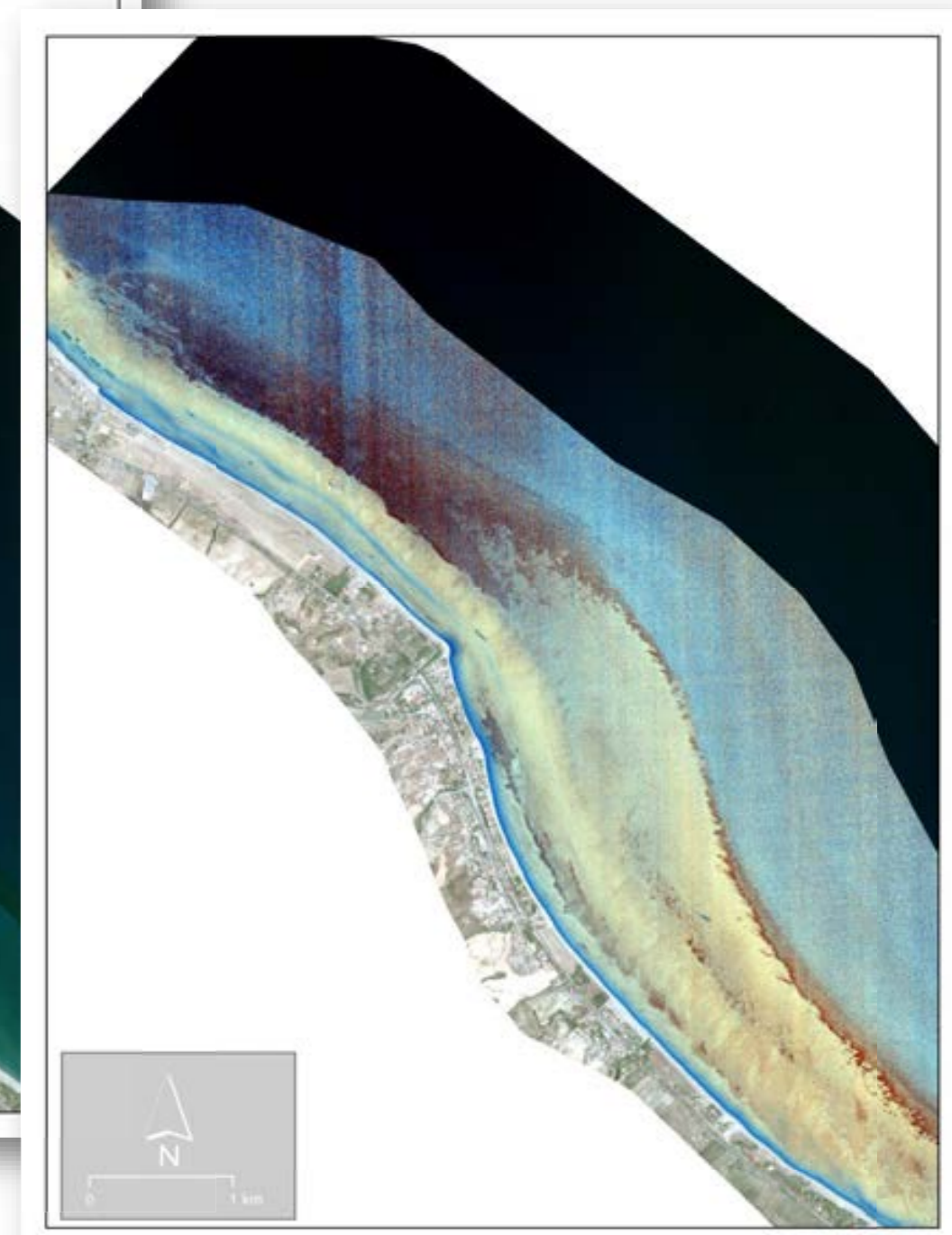


Fondali Crosta - Pietrapaola - Cariati

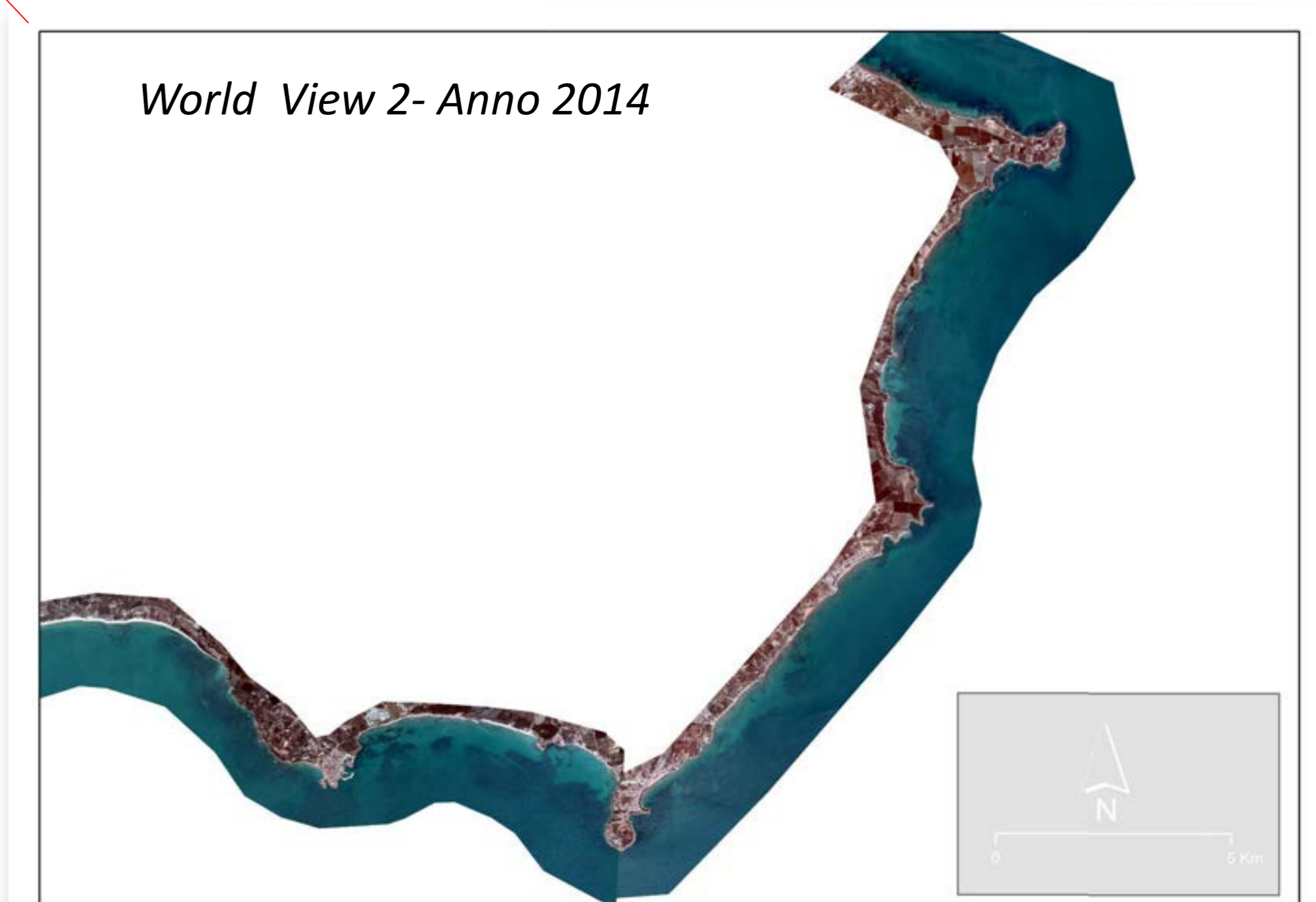


Pleiades - Anno 2018

Immagine WCC



Fondali da Crotone a Le Castella



Fondali Capo Vaticano

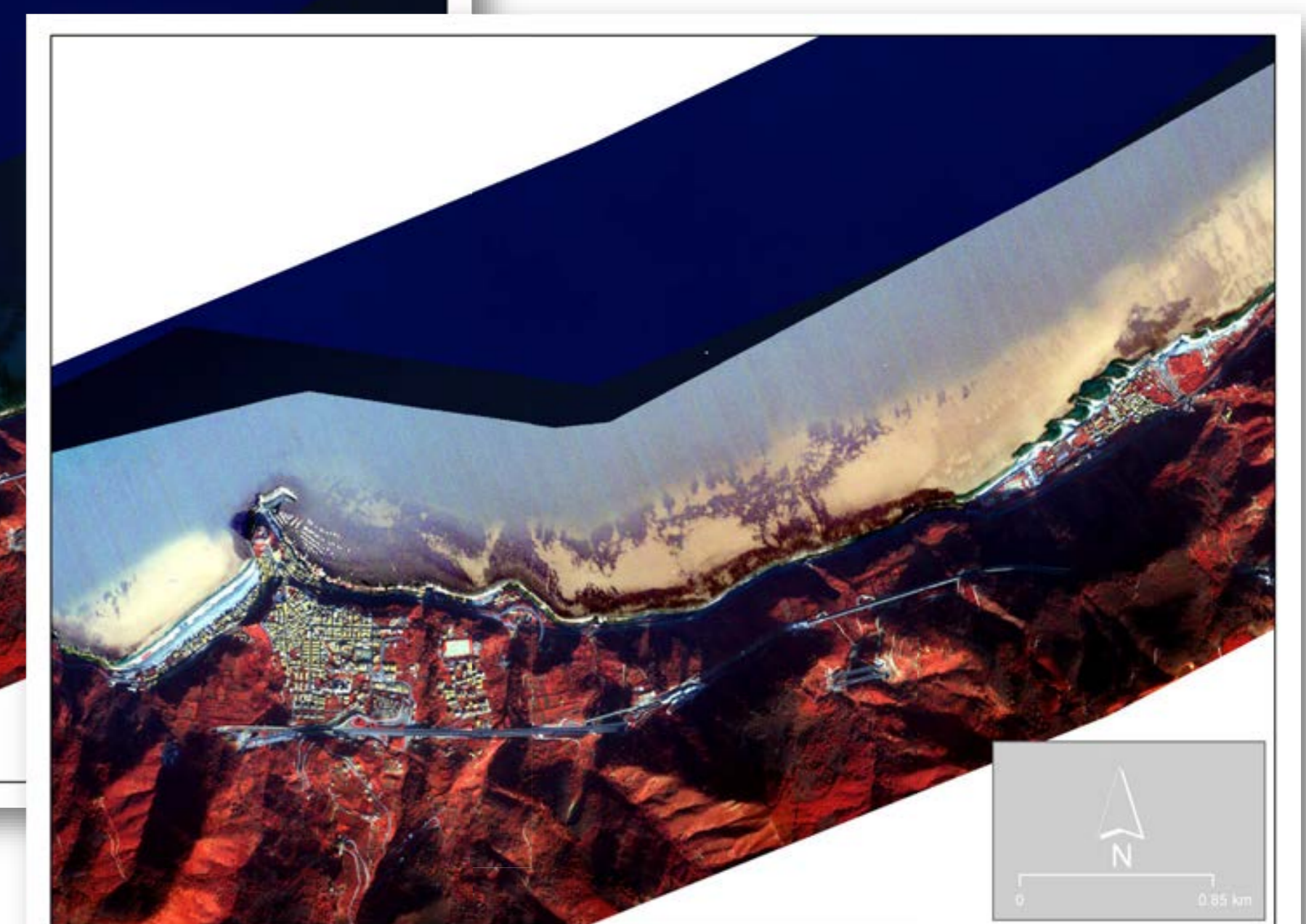


Pleiades - Anno 2018

Fondali di Scilla



Immagine WCC



MIVIS - Anno 2011