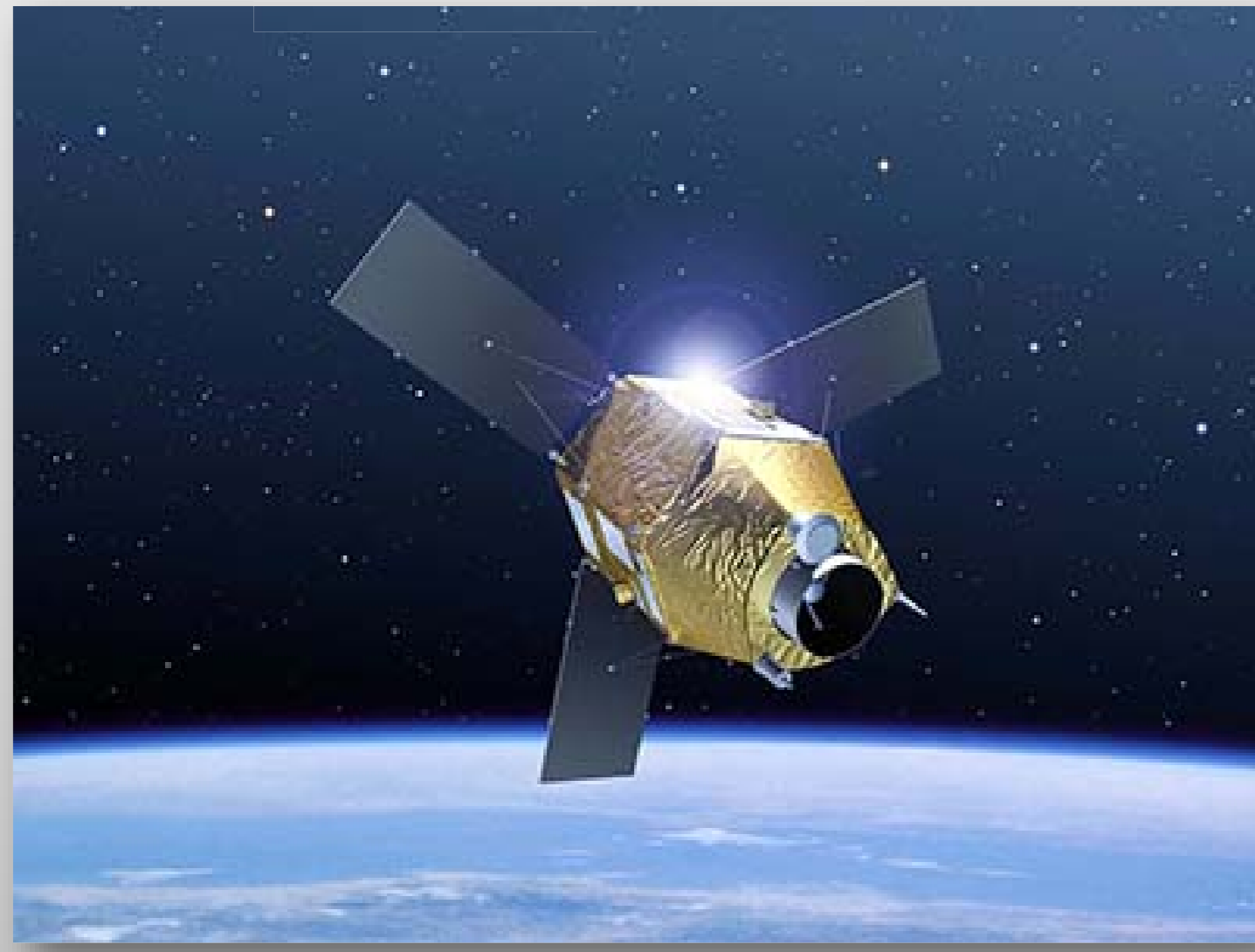


**I SITI DI IMPORTANZA COMUNITARIA (SIC) MARINI DELLA CALABRIA**  
STATO DELLE CONOSCENZE E IMPLICAZIONI NELLE STRATEGIE DI MONITORAGGIO, GESTIONE E CONSERVAZIONE.  
VALUTAZIONE DELLO STATO ECOLOGICO DELLE ACQUE MARINO COSTIERE DELLA CALABRIA [METODO "CARLIT"].

## MAPPATURA FONDALI SIC MEDIANTE IMMAGINI SATELLITARI PLEIADES E WORLD VIEW 2

### Pleiades MS

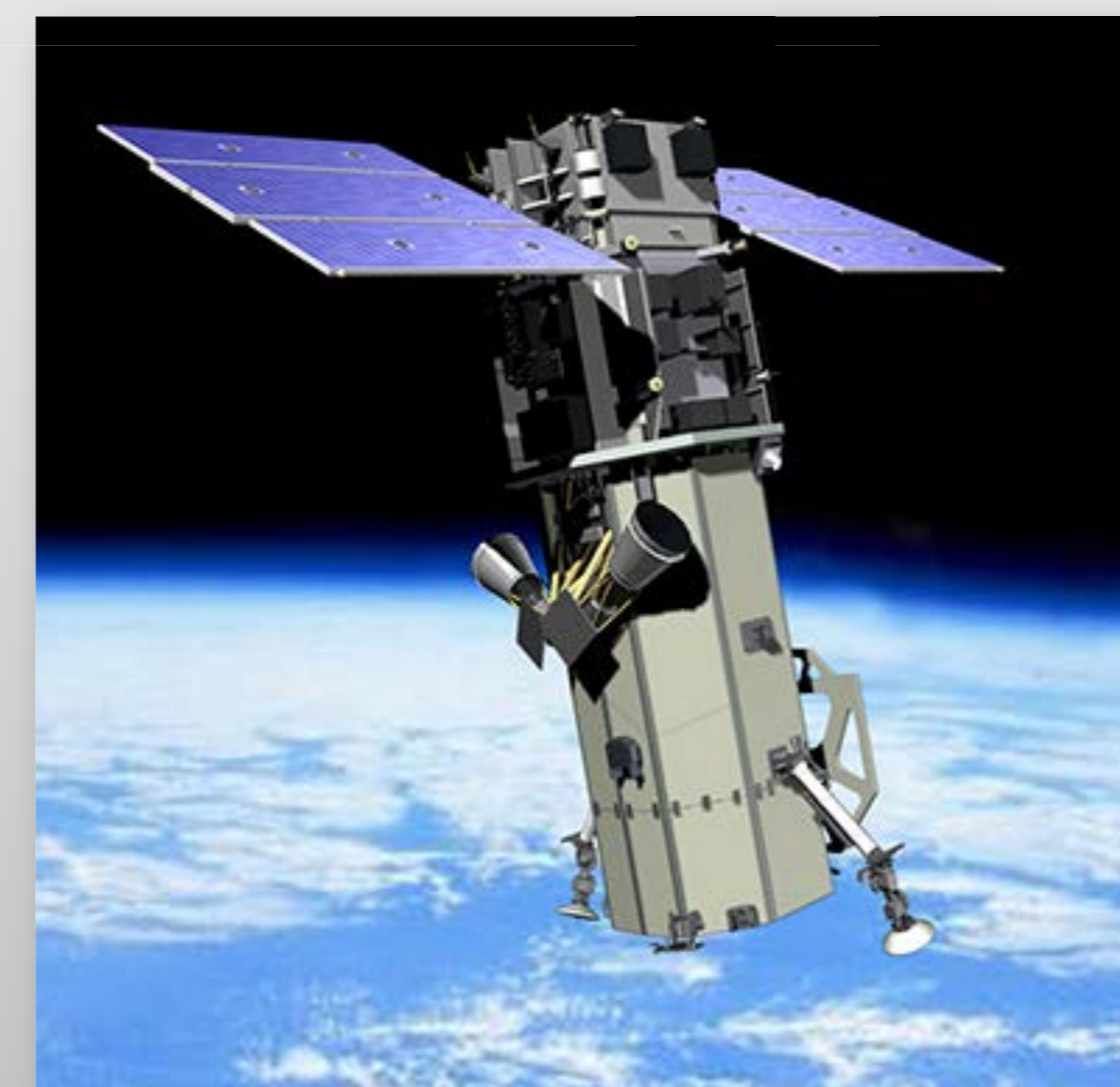


AIRBUS Defence & Space

**Sensor Bands:** 5 Multispectral (P: 480-830 nm  
Blue: 430-550 nm Green: 490-610 nm  
Red: 600-720 nm Near Infrared: 750-950 nm);

**Sensor Resolution GSD:** (50-cm panchromatic  
50-cm color (pansharpened) 2-meter multispectral  
Bundle: 50-cm panchromatic and 2-meter multispectral);

### Satellite World View 2 MS

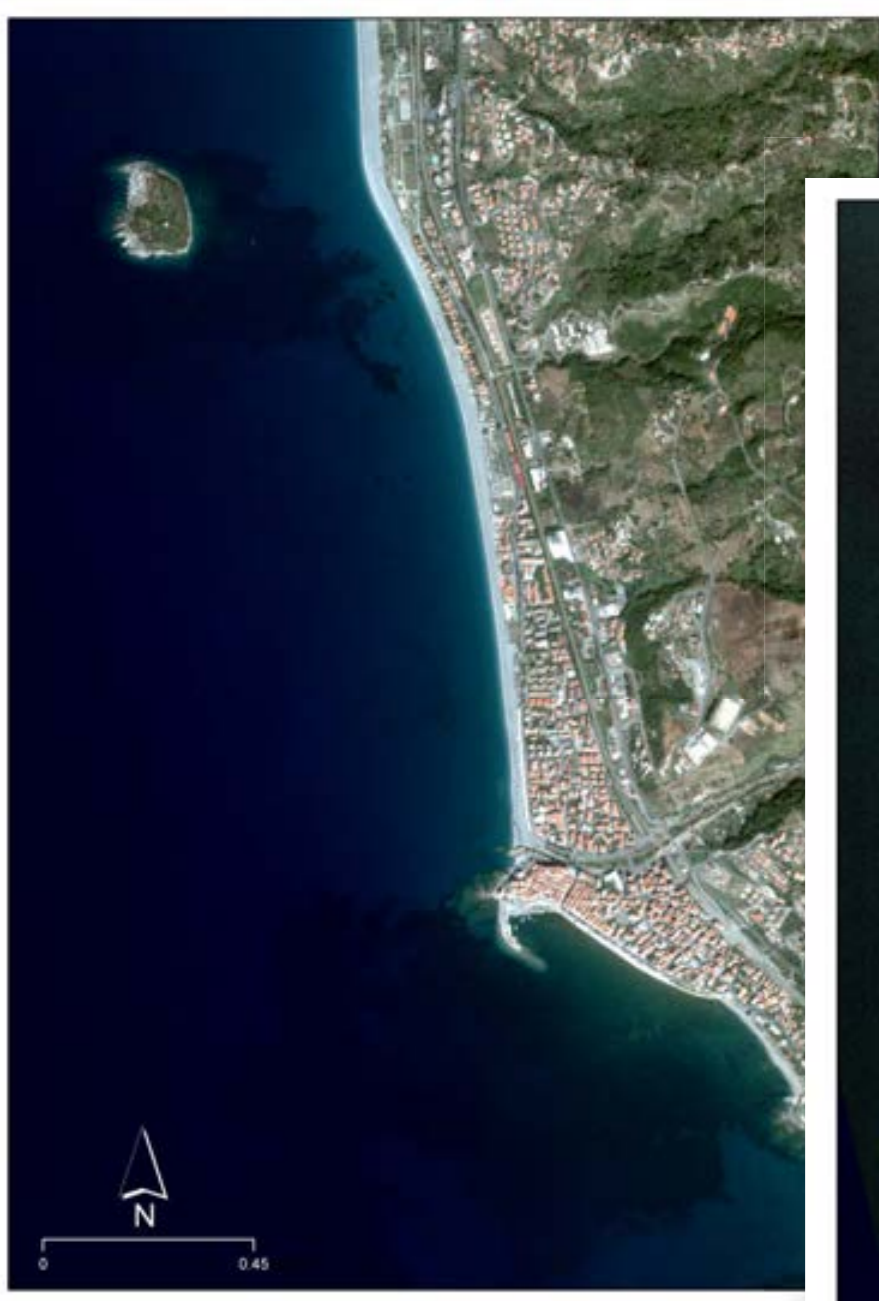


DigitalGlobe

**Sensor Bands:** 8 Multispectral (4 standard colors: red, blue, green, near-IR); 4 new colors: red edge, coastal, yellow, near-IR2;

**Sensor Resolution GSD:** Ground Sample Distance  
Panchromatic: 0.46 meters GSD at Nadir, 0.52 meters GSD at 20° Off-Nadir  
Multispectral: 1.84 meters GSD at Nadir, 2.4 meters GSD at 20° Off-Nadir

### Fondali Isola di Cirella - Diamante



Pleiades - Anno 2018

Immagine WCC



### Fondali di Pizzo Calabro

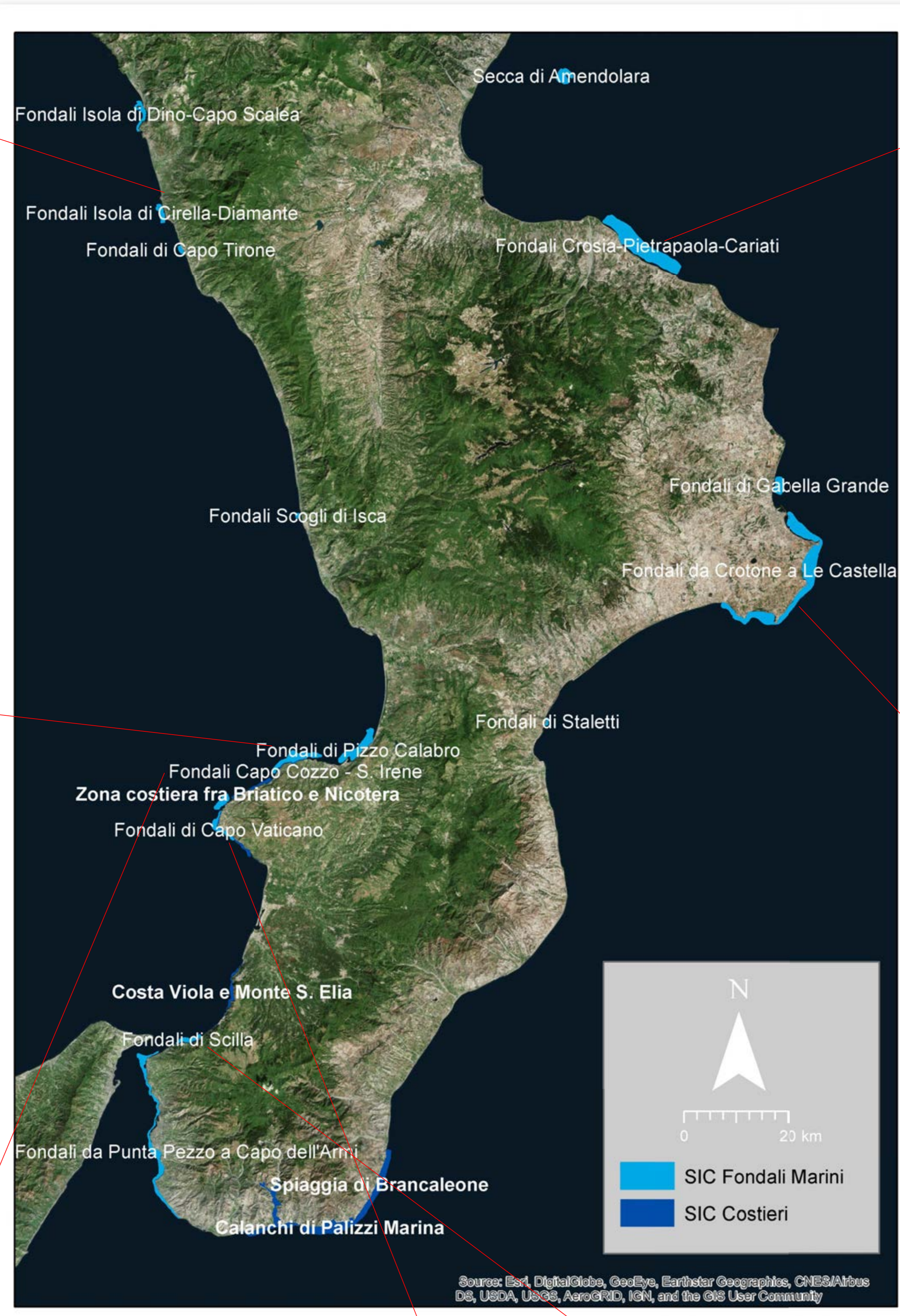


Pleiades - Anno 2018

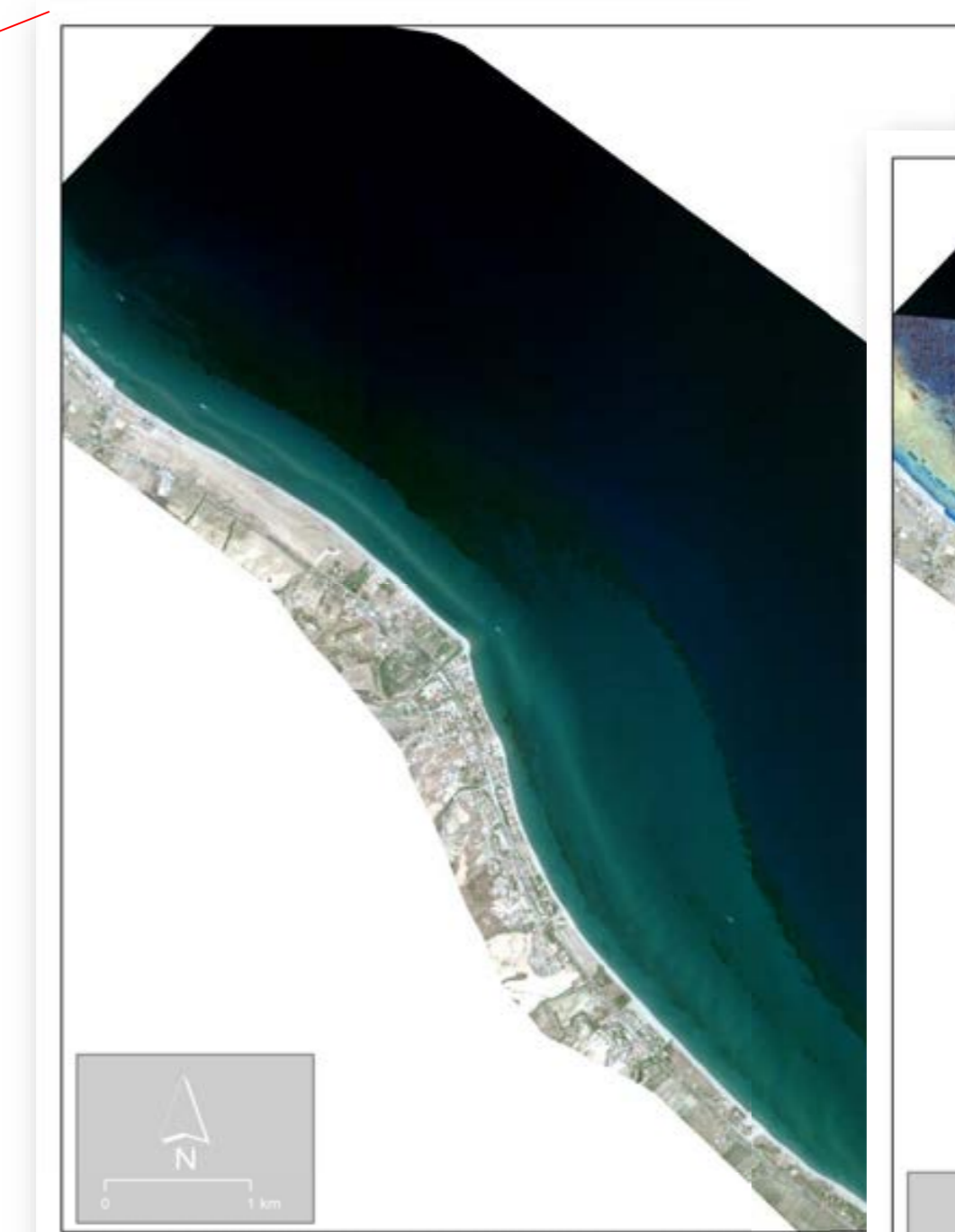
### Fondali Capo Cozzo S'Irene



Pleiades - Anno 2018

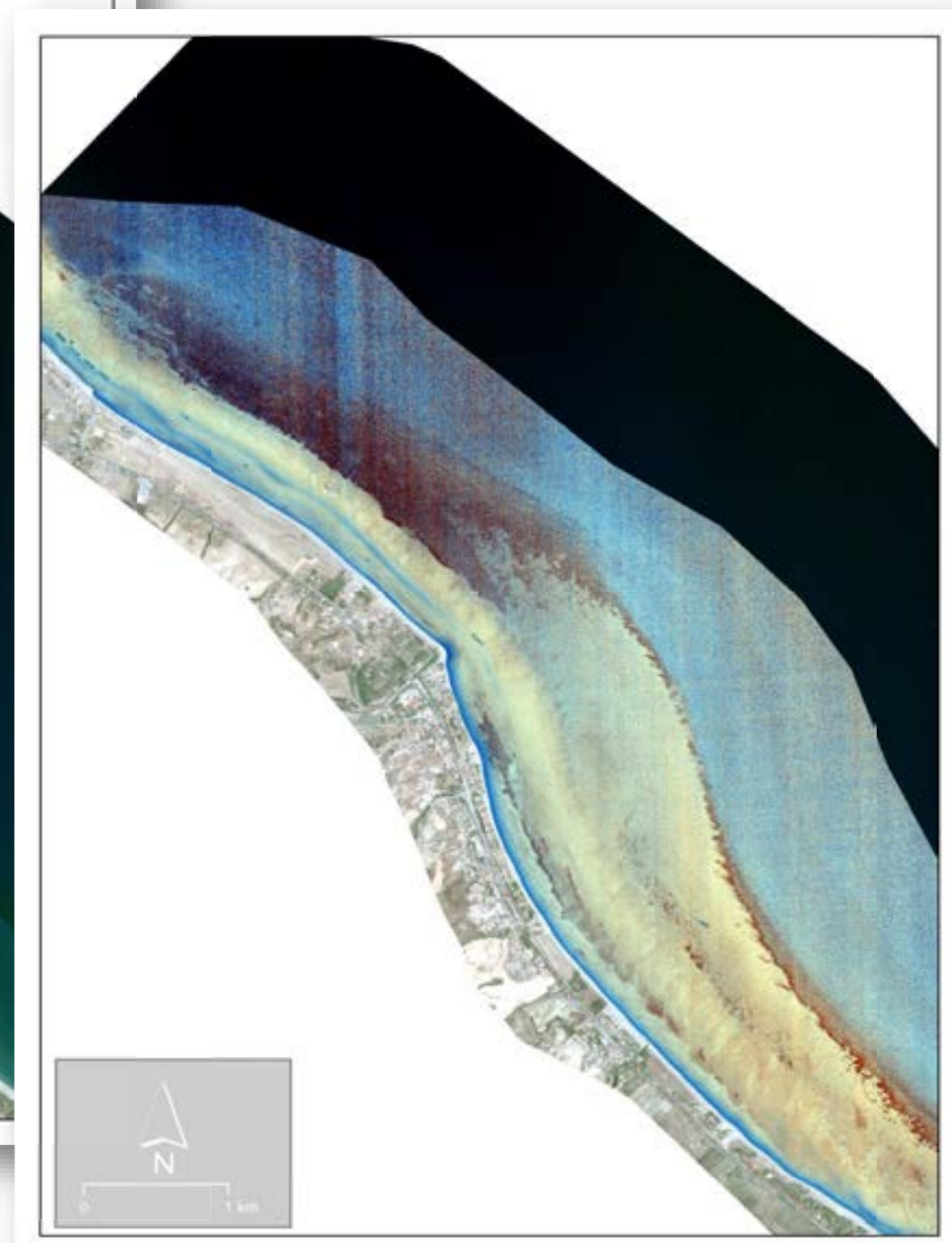


### Fondali Crosta - Pietrapaola - Cariati

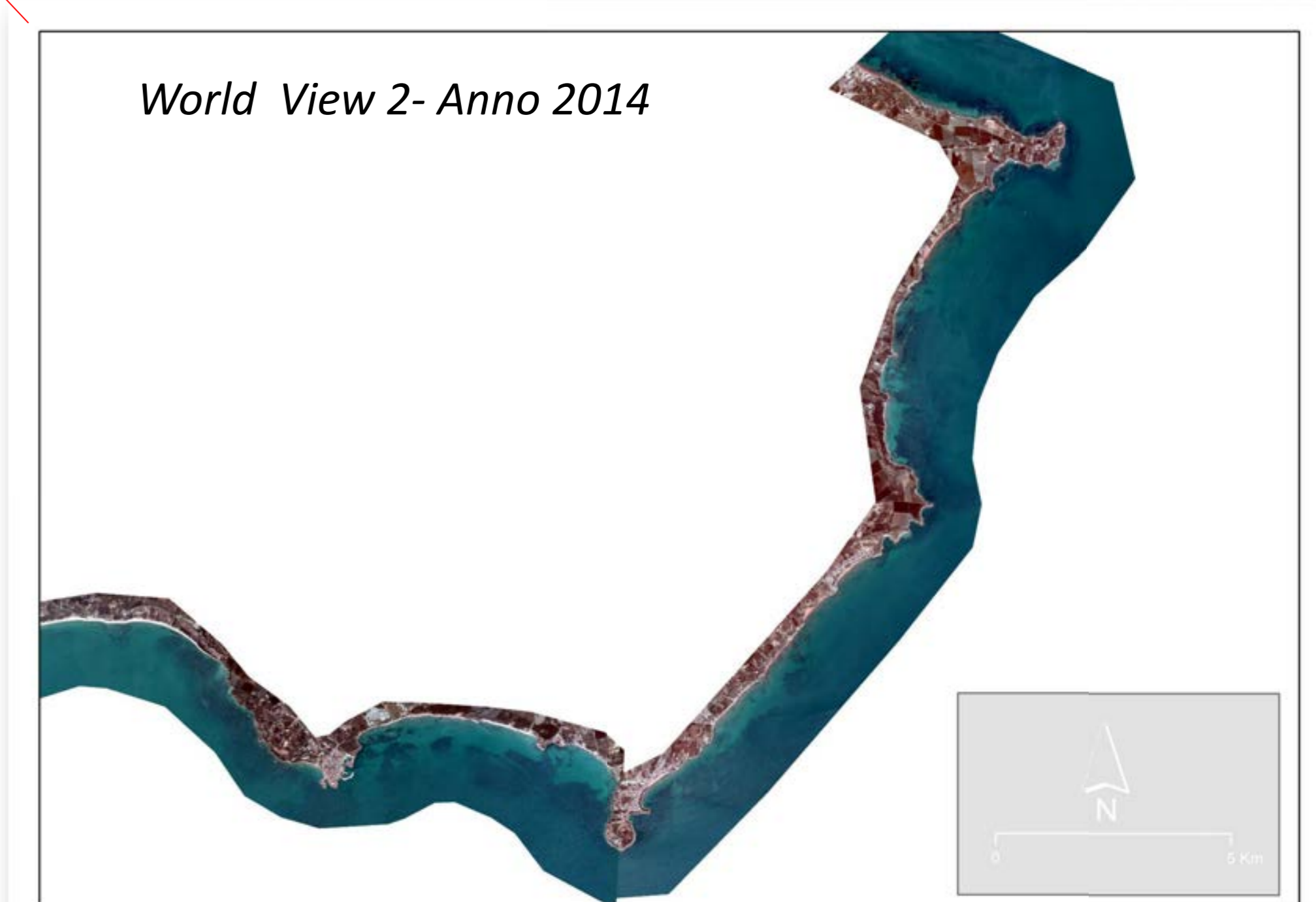


Pleiades - Anno 2018

Immagine WCC



### Fondali da Crotone a Le Castella



### Fondali Capo Vaticano

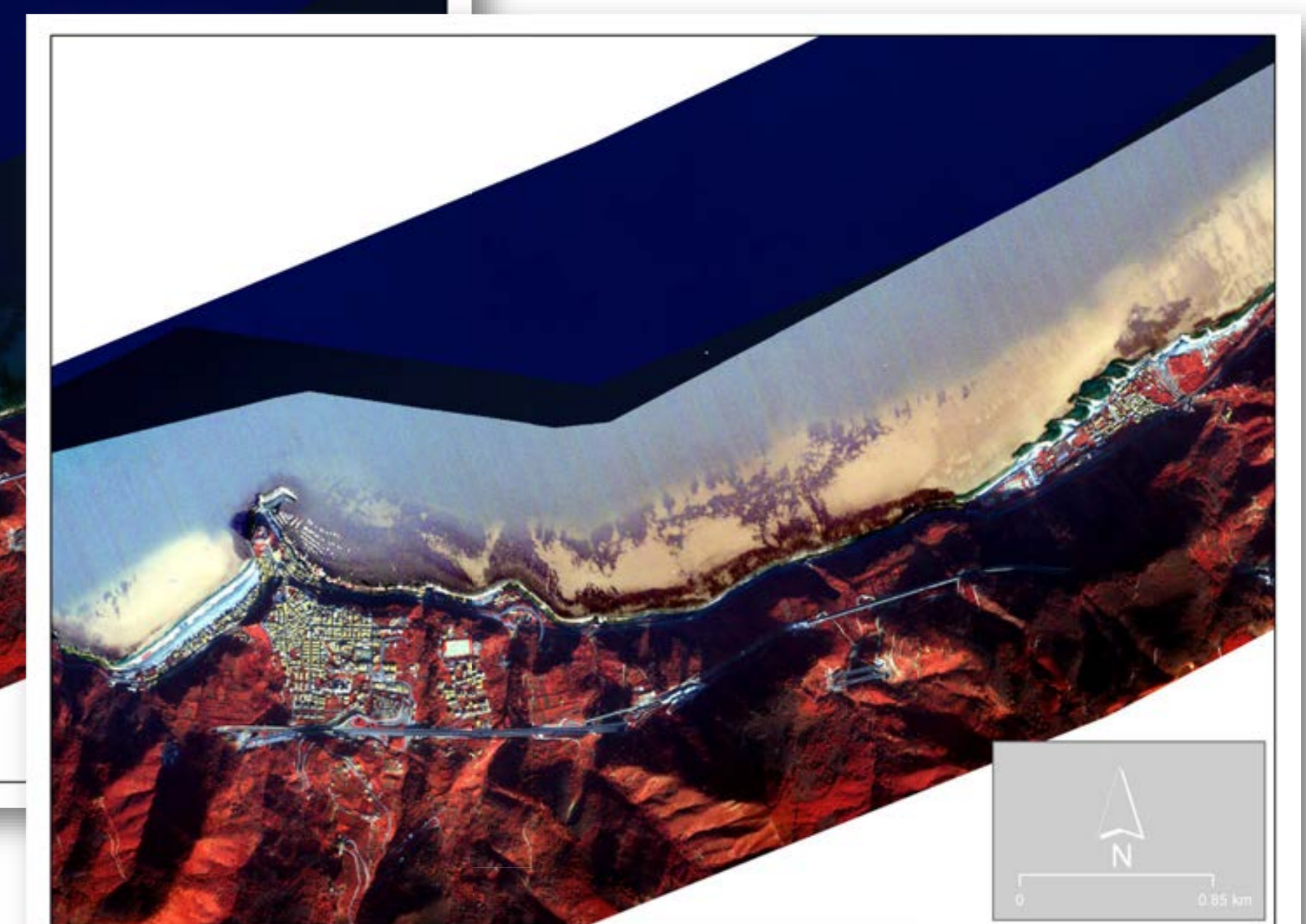


Pleiades - Anno 2018

### Fondali di Scilla



Immagine WCC



MIVIS - Anno 2011